

# Scenic Air Tours From Kununurra

aviair

## Explore The Bungle Bungle Range and Mitchell Falls

Scenic Flights | Fly-in Day Tours | Overnight Packages



2024

BOOK NOW | [AVIAIR.COM.AU](https://aviair.com.au) | 08 9166 9300 | [BOOKINGS@AVIAIR.COM.AU](mailto:BOOKINGS@AVIAIR.COM.AU)





## Choose a Bungle Bungle tour that suits you

Tour Code	Return Scenic Flight from Kununurra to the Bungle Bungle	Guided Walk to Cathedral Gorge & Bungle Bungle Domes	Guided Walk to Echidna Chasm	Overnight Stay at Bungle Bungle Savannah Lodge	Bungle Bungle Helicopter Flight	Cruise	Available	Approx. Duration	Adult Price	Page
<b>C</b>	✓						Year round	2 hours	\$495	3
<b>CJ3</b>	✓					Ord River Cruise	April to October	2 hours + 6 hours	\$712	10
<b>CLAS</b>	✓					Lake Argyle Sunset Cruise	March to November	2 hours + 5.75 hours	\$609	10
<b>E</b>	✓				30 minutes		April to October	4 hours	\$994	3
<b>B1</b>	✓	✓					April to September	8 hours	\$949	4
<b>B18</b>	✓	✓			18 minutes		April to September	8 hours	\$1,279	5
<b>B30</b>	✓	✓			30 minutes		April to September	8 hours	\$1,449	5
<b>G</b>	✓	✓	✓				April to September	Full day	\$1,459	6
<b>G0</b>	✓	✓	✓	✓			April to September	Full day / 1 night	\$1,849	7

Also view our value-packed Mitchell Falls Discoverer day trip (page 10). Senior & child rates available.

### Why choose Aviair

- ✓ All planes are air-conditioned, with large windows and high wings for optimal viewing
- ✓ Courtesy transfers to and from our terminal within Kununurra
- ✓ Complimentary cold bottled water and chilled refresher towels
- ✓ Locally owned award-winning company with over 40 years experience
- ✓ Aviair is a CASA approved commercial airline operating to the highest flying and maintenance safety standards
- ✓ Personalised pilot commentary

**aviair**



## Bungle Bungle Adventurer

TOUR CODE C

This two-hour scenic flight takes you on an unforgettable adventure over the Bungle Bungle Range in the World Heritage listed Purnululu National Park. View Lake Argyle, the old Argyle Diamond Mine and Ord Irrigation Area. You will also fly over the stunning Carr Boyd Ranges, Osmand Ranges, the Ord and Bow River.

AVAILABLE	All year round
DURATION	Approximately 2 hours
DEPARTURE	6:00am, 9:00am and 2:30pm
COST	Adult \$495   Child \$475   Senior \$475
BRING	Camera

### ADD ON:

**Guided walking tours, overnight stays, helicopter flights or cruises to your Bungle Bungle experience!**  
See pages 4-8 for touring options.

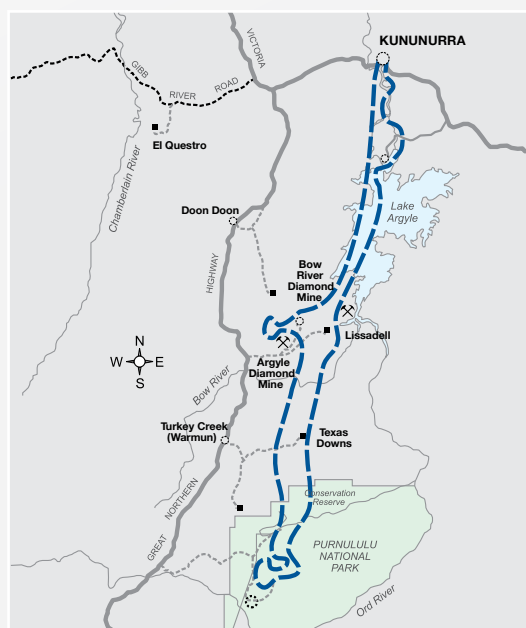
### ADD ON:

**+ 30 Minute Bungle Bungle Helicopter Flight** 

TOUR CODE  
E

Land in Purnululu National Park and transfer to a helicopter for an exhilarating 30 minute helicopter ride! View the hidden red rock gorges of the northwest tip, Piccaninny Gorge from end to end and the unique beehive formations that have contributed to the listing of the Bungle Bungle Range as Australia's newest World Heritage area.

AVAILABLE	April to early October — on demand
DEPARTURE	9:00am
RETURN	Approx. 1:00pm
COST	Adult \$994   Child \$974   Senior \$974







## Bungle Bungle Wanderer



TOUR CODE B1

**Experience the East Kimberley and Purnululu National Park by air before landing to join a guided walking tour into the Domes & Cathedral Gorge!**

### Tour highlights:

Commence your day tour with a one hour scenic flight from Kununurra to Purnululu National Park, see page 3 for details.

Land in Purnululu National Park to meet your guide and drive to the Bungle Bungle Range where you will start a moderate rated 3km walk. Marvel at the iconic eroded towers and the striking black and orange banded beehive structures.

Your guide will take you into Cathedral Gorge, where the towering cliffs open up to form a space with awe-inspiring natural acoustics. Enjoy a picnic lunch while you take in the magic of Cathedral Gorge.

View the unique formations of Piccaninny Creek, which flows only in the wet season, before heading to Bungle Bungle Savannah Lodge for a delicious afternoon tea.

Conclude your day with a scenic flight back to Kununurra, offering a captivating view of the Argyle Diamond Mine, known for its history of mining rare pink diamonds.

Lunch and afternoon tea included.

---

<b>AVAILABLE</b>	15th April to 15th September
<b>DURATION</b>	8 hours
<b>DEPARTURE</b>	9:00am (6:00am September)
<b>RETURN</b>	5:00pm (2:00pm September)
<b>COST</b>	Adult \$949   Child \$769   Senior \$929
<b>BRING</b>	Camera (must have lanyard or wrist strap for optional helicopter flight), day-pack (optional), sturdy walking/hiking shoes (no leather soles), hat, sunglasses, sunscreen, water bottle, light cotton clothing. A small cooler bag with your lunch is provided.

---





## UPGRADE YOUR TOUR WITH A HELICOPTER FLIGHT!

### ADD ON:

**+ 18 Minute Bungle Bungle Helicopter Flight**  TOUR CODE B18

Depart Bellburn Airstrip for the southern tip of the Bungle Bungle Range where you will view Y Gorge before flying across the top of the massif to the mouth of spectacular Piccaninny Gorge. Soar over Piccaninny Creek to view Cathedral Gorge and the famous black and orange striped beehive shaped domes.

#### **Bungle Bungle Wanderer + Helicopter Price**

Adult \$1,279 | Child \$1,099 | Senior \$1,259

### ADD ON:

**+ 30 Minute Bungle Bungle Helicopter Flight**  TOUR CODE B30

The sandstone massif of the Bungle Bungle Range is almost 50 times the area of Uluru – there are more stunning features and spectacular landforms to see in this half hour scenic flight than you would imagine possible. View the hidden red rock gorges of the north-west tip, Piccaninny Gorge from end to end and the unique beehive formations that have contributed to the listing of Purnululu National Park as one of Australia's World Heritage areas.

#### **Bungle Bungle Wanderer + Helicopter Price**

Adult \$1,449 | Child \$1,269 | Senior \$1,429





Echidna Chasm



## Bungle Bungle Wanderer + Echidna Chasm

TOUR CODE G

Experience the East Kimberley & Purnululu National Park by air before landing to join a guided walking tour into the Domes, Cathedral Gorge and Echidna Chasm!

### Tour highlights:

Commence your day tour with a one hour scenic flight from Kununurra to Purnululu National Park, see page 3 for details.

Upon landing in Purnululu National Park, meet your guide and journey into the Bungle Bungle Range. Embark on the Domes Walk, amidst the iconic eroded towers and striking black and orange banded beehive structures.

Your guide will take you into Cathedral Gorge, where the towering cliffs open up to form a space with awe-inspiring natural acoustics.

You will then drive 65 minutes to the northern end of Purnululu National Park where you will see the landscape transform from domes to deep narrow gorges adorned with Livistona palm trees clinging to towering walls.

A rocky path leads your walk into Echidna Chasm, which narrows until it is just two shoulders' width apart.

Conclude your day with a scenic flight back to Kununurra, providing aerial views of the Argyle Diamond Mine, renowned for the extraction of rare pink diamonds.

Morning tea, lunch and afternoon tea included.

**Note:** A good level of mobility is required for the 5km moderate-hard walk. It includes walking over rocks, walking around boulders and climbing small ladders with handrails. It is a full and immersive day of exploring.

---

AVAILABLE	15th April to 15th September
DURATION	Full day
DEPARTURE	6:00am
RETURN	5:00pm
COST	Adult \$1,459   Child \$1,179   Senior \$1,419
BRING	Camera, day-pack (optional), sturdy walking/hiking shoes (no leather soles), hat, sunglasses, sunscreen, water bottle, light cotton clothing. A small cooler bag with your lunch is provided.

---





ADD ON:

**+ Overnight Stay at Bungle Bungle Savannah Lodge**

**TOUR CODE GO**

### **Spend a night in the heart of Purnululu National Park**

Dinner, bed and breakfast package in private ensuite cabins. Equipped with a licensed bar, outdoor fire, the only swimming pool in the national park and restaurant which provides indoor/outdoor dining with chef-prepared meals using fresh local ingredients infused with native herbs and spices, served buffet style.

#### **Bungle Bungle Wanderer + Echidna Chasm + Overnight Stay Price**

Adult \$1,849\* | Child \$1,469\* | Senior \$1,809\* | + Accommodation Single Supplement \$242

\*Twin Share.





## Mitchell Falls Discoverer

TOUR CODE H

Embark on an exhilarating full-day adventure to Punamii-Uunpuu (Mitchell Falls)!

This value-packed tour includes a scenic plane flight, thrilling helicopter flights, an optional guided hike and meals.

### Tour highlights:

Begin your journey with a picturesque flight from Kununurra to Mitchell Plateau, soaring over the scenic Ord River Irrigation Area, Carlton Hill Station, Wyndham, and the Cambridge Gulf, offering views of patterned mud flats. Marvel at the Berkley River, King George Falls, and Kalumburu from the sky.

Upon landing at Mitchell Plateau, transfer to a HeliSpirit helicopter for a short flight to Mitchell Falls Campground. For the fit and experienced hikers, a 4.5km guided walk awaits, revealing ancient rock art and waterholes along the way. Alternatively, those opting for ease will be treated to a complimentary helicopter transfer to the top of Mitchell Falls.

Enjoy a picnic lunch while taking in the awe-inspiring views of Mitchell Falls. If time allows, indulge in a refreshing swim in the upper pools. Conclude your unforgettable experience with a helicopter ride back to the airstrip, offering a great photo opportunity on departure.

As you journey back to Kununurra, relish in views over Home Valley Station, the Cockburn Range and El Questro as the afternoon sun illuminates the landscape.

AVAILABLE	May to August, on demand
DURATION	Full Day Tour 6:00am to 3:00pm
COST	\$1,799 per person (includes \$40 Wunambal Gaambera fee) Tour includes morning tea, lunch and a beer or wine to enjoy before your flight home
BRING	Camera, day pack, swimwear, towel, water bottle, sturdy walking/hiking shoes, light cotton clothing, hat, sunscreen, jacket for cool mornings/helicopter flights



### HELICOPTER OR HIKE

The hike to Mitchell Falls is along a 4.5 km difficult and uneven track with water crossings, which can be slippery.

Mitchell Falls is in a very remote area, if you are at all unsure of your ability to do the hike, please choose the complimentary helicopter transfer.

You will need to advise of hike or helicopter at the time of booking.



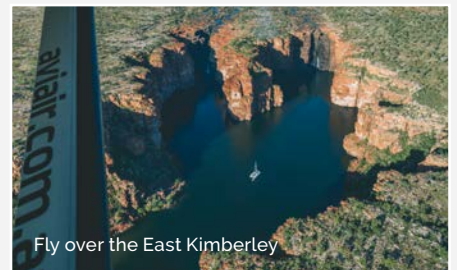




Swim at the top of the falls



Hike



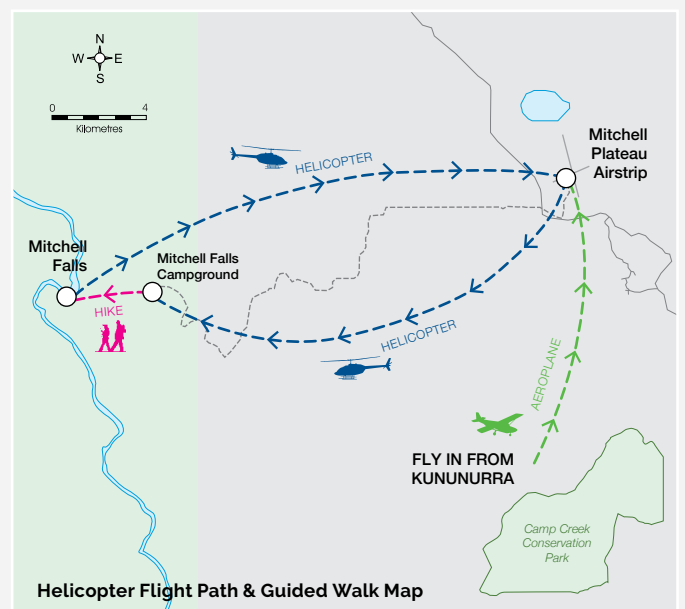
Fly over the East Kimberley



Discover ancient Rock Art



Patterns in the King River mud flats







aviair



# Plane from El Questro

## **ELQC | Bungle Bungle & Ragged Ranges Scenic Flight**

**April to Mid-October | Flight time: 2 hours | Cost: \$749 per person**

Explore the Bungle Bungle Range from above on this 2-hour scenic flight from El Questro. Take in stunning views of the East Kimberley landscape including the Ragged Ranges, Lissadell and Texas Down Stations and the Osmond Range before the iconic bee-hived striped domes of the Bungle Bungle Range come into sight. On the way back track towards El Questro flying over the decommissioned Argyle Diamond Mine, home to 95% of the world's pink diamonds.

**Bring: Sunglasses & camera.**

## **ELQB1 | Bungle Bungle Day Tour with Guided Walk**

**Mid-April to Mid-September | Flight time: 2 hours | Cost: \$1,449 per person**

**Tour duration: 8 hours – 8:50am to 5:00pm (September tours 5:50am to 2:00pm)**

Take in spectacular views of the East Kimberley landscape on a scenic flight to the World Heritage listed Purnululu National Park. Fly over the Ragged Ranges, Lissadell and Texas Down Stations and the Osmond Range before the Bungle Bungle Range comes into sight. Land at Bellburn Airstrip where your guide will meet you in an air-conditioned 4WD bus. Marvel at the famous black-and-orange banded beehive structures on the Domes walk. Follow your guide along towering cliffs into the breathtaking amphitheatre of Cathedral Gorge. Take in the magic of the 360 million year old sandstone structures while you enjoy your picnic lunch. Return to the airstrip to board your scenic flight back to El Questro, viewing the fascinating Argyle Diamond Mine along the way.

*This tour is of moderate intensity and includes a 3km walk.*

**Bring: Re-fillable water bottles, hat, sunscreen, sun protective clothing, sunglasses & camera.**

## **+ ADD A HELICOPTER FLIGHT OVER THE BUNGLE BUNGLE RANGE**

**ELQB18 | Flight time: 18 minutes | Cost: \$1,779 per person**

**ELQB30 | Flight time: 30 minutes | Cost: \$1,949 per person**

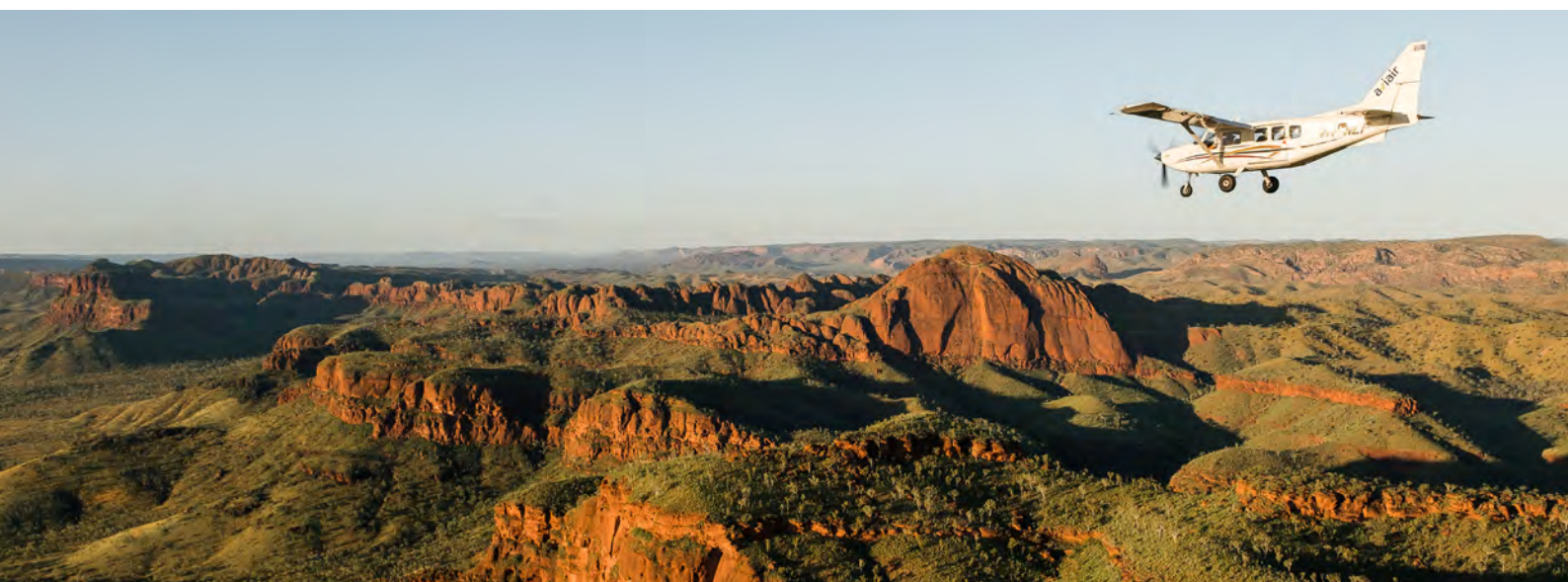
## **Transfers: Kununurra to El Questro (or vice versa) via the Bungle Bungle Range**

**Duration: 2 hours**

Take the scenic route from Kununurra to El Questro on this 2-hour air adventure. View enthralling scenes of the Ord River, Lake Argyle, Bow River and Osmond Range before flying over the 360 million year old structures of the Bungle Bungle Range. Tracking back towards El Questro, you will fly over the decommissioned Argyle Diamond Mine and the Carr Boyd Range before landing at the remote El Questro Station airstrip. Note: flights from El Questro to Kununurra don't fly over Lake Argyle or the Ord River.

## **Direct Transfers: Kununurra to El Questro (or vice versa)**

Available on request.







**aviair**



# Plane from El Questro

## ELQHT | Punamii-Uunpuu (Mitchell Falls) Day Tour

**May to August** | Flight time: 4 hours (including 15 minute helicopter flights)

**Tour duration:** 7:30am to 3:00pm | **Cost:** \$2,449 per person (minimum 4 passengers)

This full-day tour by plane covers an area the size of central Europe. Majestic waterfalls, remote cattle stations, wilderness reserves and incredible coastal views will keep you enthralled all day. Departing from El Questro Station, fly by plane along the Kimberley coastline viewing, Berkeley River Gorge, King George Falls, and Kalumburu along the way. Land at the remote Mitchell Plateau airstrip, transfer to a HeliSpirit helicopter and fly to the top of Mitchell Falls. Enjoy time at the falls, take a dip, have lunch and marvel at the cascading waterfalls. Return to Mitchell Plateau airstrip via helicopter. As the plane tracks back to El Questro, take in the stunning scenes of the Cockburn Range glowing in the afternoon sun.

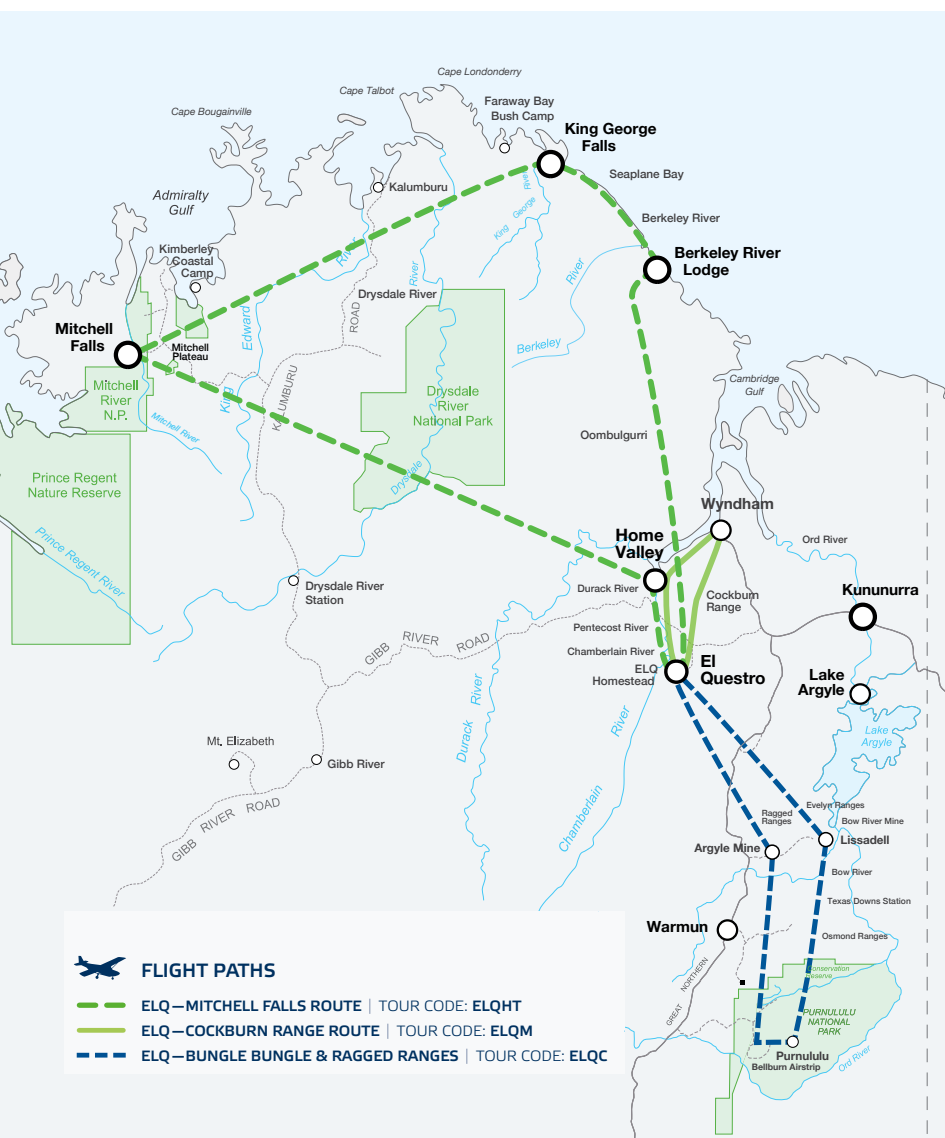
**Bring:** Re-fillable water bottles, hat, sunscreen, sun protective clothing, sunglasses, swimwear, small towel & camera.

## ELQM | Capture the Cockburn Range Flight

**April to Mid-October** | Flight time: 30 minutes | **Cost:** \$370 per person

Explore El Questro and beyond on this picturesque scenic flight. Witness the sheer cliffs of the Cockburn Range glow red as the sun washes over the landscape. Track towards Wyndham where river systems create meandering patterns through the mudflats before returning to El Questro airstrip.

**Bring:** Sunglasses & camera.





## FLIGHT/CRUISE COMBOS

ADD A LAKE OR RIVER CRUISE ON TO YOUR BUNGLE BUNGLE ADVENTURER SCENIC FLIGHT (PAGE 3) AND SAVE UP TO \$25 – You can split the flight and cruise over two days



### Triple J Ord River Day Tour

TOUR CODE CJ3

The day begins with complimentary pick up from your Kununurra accommodation, before travelling by coach through Durack country to Lake Argyle (70km). Stop for a short break at the historic Durack Homestead Museum. This museum was constructed as a replica of the original family homestead and uses the original homestead stone. Re-board the coach for a short drive to Lake Argyle Resort before viewing the vastness of Lake Argyle from a scenic look-out. The coach crosses the Ord Top Dam wall, which provides views of the Ord Hydro-Power Station, before boarding the Triple J Tours boat for a scenic 55 km cruise back to Kununurra. Marvel at the spectacular scenery, wildlife, flora and fauna found along the way, including the elusive freshwater crocodile! Enjoy afternoon tea at a riverside camp before heading back to Kununurra. Take in a colourful East Kimberley sunset before docking at the marina and re-boarding the coach for drop off to your accommodation.

**Available** April to October  
**Duration** 2 hour flight + 6 hour cruise (J3 incl. 1 hour coach transfer)  
**Departure** Flight: 6:00 am, 9:00 am or 2:30 pm (Apr-Sept) 6:00 am (Oct)

**Cruise Price Bring** Pick-up approx 11:30 am, returns approx. 5:30 pm  
 Adult \$712 | Child \$663 | Senior \$697  
 Cruise: Camera, hat, sunglasses, sunscreen, water bottle and light jacket



### Lake Argyle Cruises Sunset Tour

TOUR CODE CLAS

Experience a coach tour from Kununurra to Lake Argyle and a majestic sunset whilst cruising on Lake Argyle. Swim in the fresh water and enjoy informative commentary about the flora and fauna and the history & expanse of the lake. Enjoy a complimentary drink and light snacks as you watch the sun setting behind the Carr Boyd Range often reflecting magnificent colours on the water.

**Available** March to November (Durack Homestead closed October to April)  
**Duration** 2 hour flight + approx. 6 hour cruise (including 1 hour coach transfer each way)  
**Departure** Flight: 6:00 am, 9:00 am or 2:30 pm (April-Sept) 6:00 am (Oct-Nov)  
**Cruise:** Pick-up times may vary, please confirm when booking  
**Price:** Adult \$609 | Child \$564 | Senior \$594  
**Bring:** Camera, hat, sunscreen, sunglasses, water bottle, swimmers, towel and light jacket



2024

aviair

# About the Company



## Locally Owned and Managed

by Michael & Kate McConachy

As we celebrate our 40th year of operation, we offer even more reasons to choose Aviair for your Kimberley scenic air tour.

Nothing is more important to us than the safety of our passengers, crew and those who assist us in delivering an award-winning product.

Aviair is a CASA approved commercial airline operating to the highest flying and maintenance safety standards — rest assured you are in safe hands.

**With significant bases in Kununurra, Broome and Karratha, we have invested heavily in our fleet to ensure it is the youngest and best presented fleet of aircraft operated in Australia's north-west.**

All of our aeroplanes are air-conditioned, with large windows and high wings for ultimate scenic views.

Our skilled pilots provide an informative commentary as you fly over some of the most beautiful scenery in the world. Aviair aeroplanes all have a centre aisle for easy access and greater headroom and legroom than other scenic flight planes in the Kimberley. Our aim is that you leave us with memories of a scenic experience of a lifetime.

As well as operating scenic air tours that have earned us multiple tourism awards, we have a significant charter flight business sector with corporate and private clients throughout Australia's north-west. In addition, we operate a regional airline, servicing major centres and remote towns of the Kimberley and Pilbara regions. Our aircraft maintenance support team is based here in Kununurra.

**Our Scenic Fleet** | Cessna Grand Caravan and GA8 Airvan



## Icon legend



Air-conditioned Aircraft



Helicopter



Boat Cruise



4WD



Tour Bus



Walking

## AVIAIR TERMS AND CONDITIONS

### Cancellation Policy

#### Day Scenic Flights/Tours:

Within 24 hours or less of departure: NON-REFUNDABLE.  
24 hours to 7 days prior to departure: 20% administration fee will be charged per booking.

#### Overnight Tour Packages:

Within 7 days or less of departure: NON-REFUNDABLE.  
8 days to 14 days prior to departure: 50% of booking will be retained.  
15 days to 30 days prior to departure: 20% of booking will be retained. A medical certificate may be requested if cancellation is on the grounds of illness.

### Validity of Rates

Prices displayed are valid to 31 March 2025 unless stated otherwise.

### Flight Times and Tour Duration

All times are estimates.

### Customer Weight

Customer and approximate baggage weights must be provided to us at time of booking. All customers and baggage will be weighed prior to departure for safety and operations reasons. We reserve the right to deny carriage to customers who provide weight information that is inaccurate by more than 15% in which case any fare paid will be forfeited.

### Maximum Weight Seat Limits

R44 Helicopter: 136kg.

### Disabled Passengers

We welcome customers with impaired mobility. We must be advised a minimum of 48 hours prior to scheduled time of departure with the level of assistance required. For health and safety reasons, we are not permitted to lift a passenger into or out of the aircraft.

### Minimum/Maximum Numbers

A minimum of two passengers or the equivalent cost is required to confirm a tour booking, unless the tour is already confirmed to run. Please call our reservations team to check

availability for one passenger. All overnight package rates are Twin Share, Single Supplement prices are available.

### Child Age/Infant Policy

Infants are classified 0-2 years and may travel free of charge, on their parent's lap. Please note that only one infant may travel per aircraft. An adult must accompany children classified as 3-12 years of age inclusive, on the flight.

### Helicopter Flight – Cameras

Cameras and phones must have lanyards/wrist straps. iPads and Tablets are not permitted on board helicopters.

**Passengers must be at the aircraft departure point 30 minutes prior to scheduled departure time.**

**Complimentary pick up from Kununurra accommodation 45 minutes prior to departure.**

**All care is taken but no liability is accepted for damage to personal items.**

**For full terms and conditions please contact Aviair or visit our website.**





**"What an experience!!"**

We did the 2 hour Bungle Bungle Adventurer flight today with Aviair. Absolutely blown away, what great value for money. Amazing scenery beyond our expectations. Our pilot McKenzie's knowledge and commentary was outstanding. Highlight of our 3 month trip driving across Western Australia.



**BOOKINGS 1800 095 500**

Book online at [aviair.com.au](http://aviair.com.au)

E: [bookings@aviair.com.au](mailto:bookings@aviair.com.au)

Lot 319 Laine Jones Drive, Kununurra Airport Western Australia 6743  
PO Box 612, Kununurra Western Australia 6743

Follow us   @aviairwa

**aviair**